

SMART FORTWO COUPÉ QUICK MANUAL



Quick Links

[Cockpit](#)

[Steering Wheel Gearshift Control](#)

[Driving and Parking](#)

[Starting](#)

[Service Flap](#)

Table of Contents

[quick guide](#)

[Table of Contents](#)

[Cockpit](#)

[Steering wheel gearshift control](#)

[Instrument cluster \(miles\)](#)

[Miles](#)

[Instrument cluster \(kilometers\)](#)

[Kilometers](#)

[Center console](#)

[Overhead control panel](#)

[Door control panel](#)

[Opening and closing](#)

[Key](#)

[Opening the upper tailgate on the coupé](#)

[Opening the lower tailgate on the coupé](#)

[Closing the tailgate\(s\) on the coupé](#)

[Opening the tailgate on the cabriolet](#)

[Opening and closing the rear soft top \(cabriolet only\)](#)

[Starter switch positions](#)

[Seats](#)

[Mirrors](#)

[Exterior rear view mirrors](#)

[Interior rear view mirror](#)

[Lighting](#)

[Low-beam headlamps](#)

[Combination switch \(high beam, highbeam flasher and turn signals\)](#)

[High beam and high-beam flasher](#)

[Turn signals](#)

[Windshield wipers](#)

Switching windshield wipers on and off

Wiping with windshield washer fluid

Rear window wiper/washer (coupé only)

Driving and parking

Starting

Parking

Refueling

Service flap

Where will I find

First-aid kit

Other ManualsLib Projects



>> Quick Guide.

smart fortwo coupé and smart fortwo cabriolet



Let the fun begin

This Quick Guide will quickly and efficiently inform you about the most important functions of your vehicle. It does not, however, in any way, replace the Operator's Manual.

This is especially significant with regard to warnings and cautions. This Quick Guide should only be used as a reference.

Therefore it is imperative that you read the Operator's Manual carefully and completely before your first drive, paying special attention to the chapter "Safety". Doing so will help you obtain the maximum pleasure from your vehicle and avoid endangering yourself and others.

Items of optional equipment are marked with an asterisk *. The equipment in your vehicle may vary, depending on the model and availability.

smart is constantly updating its vehicles to the very latest state of the art and therefore reserves the right to introduce changes in design, equipment and technical features at any time. You cannot, therefore, base any claims on the data, illustrations or descriptions in this Quick Guide.

The Operator's Manual, Quick Guide and Maintenance/Warranty Booklet (USA only) or Service/Warranty Booklet (Canada only) belong to the vehicle. You should always keep these documents in the vehicle and make sure that you pass them on to the next owner if and when you come to sell your smart.

Please contact an authorized smart center if you have any further questions.

The Technical Documentation team at Daimler wishes you many happy hours at the wheel.

Warning!

Various warning stickers are affixed to your vehicle. Their purpose is to draw your attention, and the attention of others, to various dangers. Therefore, do not remove

any warning stickers unless the sticker clearly states that you may do so. If you remove the warning stickers, you or others could be injured by failing to recognize certain dangers.

Symbols


Trademarks®:


- ESP® is a registered trademark of Daimler.

* Optional equipment

Warning!

Warning notices draw your attention to hazards that may endanger your health or life, or the health or life of others.

 Highlights hazards that may result in damage to your vehicle.

 Helpful hints or further information you may find useful.

▶ This symbol points to instructions for you to follow.

▶ A number of these symbols appearing in succession indicates a multiple-step procedure.

▷ This continuation symbol marks a warning or procedure which is continued on the next page.

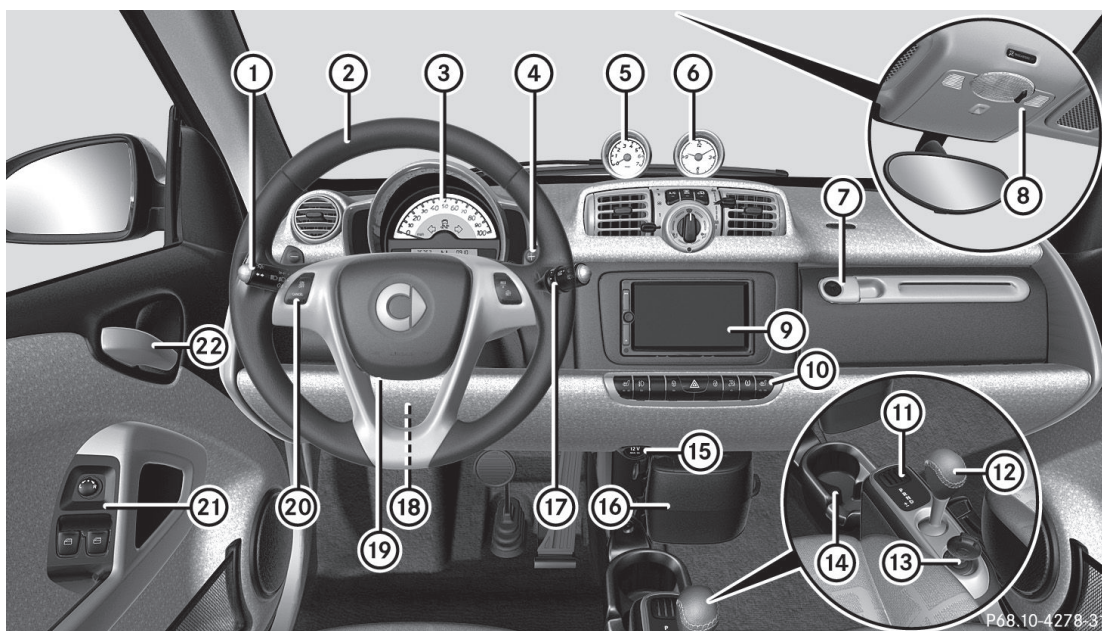
At a glance	2	Operation	15
Cockpit	2	Refueling	15
Steering wheel gearshift control	3	Service flap	15
Instrument cluster (miles)	4		
Miles	4		
Instrument cluster (kilometers)	6	Practical hints	16
Kilometers	6	Where will I find ...?	16
Center console	8	First-aid kit*	16
Overhead control panel	9		
Door control panel	9		
Getting started	10		
Opening and closing	10		
Key	10		
Opening the upper tailgate on the coupé	10		
Opening the lower tailgate on the coupé	10		
Closing the tailgate(s) on the coupé	10		
Opening the tailgate on the cabriolet	10		
Opening and closing the rear soft top (cabriolet only)	11		
Starter switch positions	11		
Seats	11		
Mirrors	11		
Exterior rear view mirrors	11		
Interior rear view mirror	12		
Lighting	12		
Low-beam headlamps	12		
Combination switch (high beam, highbeam flasher and turn signals)	12		
High beam and high-beam flasher	12		
Turn signals	13		
Windshield wipers	13		
Switching windshield wipers on and off	13		
Wiping with windshield washer fluid	13		
Rear window wiper/washer (coupé only)	13		
Driving and parking	14		
Starting	14		
Parking	14		



2 Cockpit

Cockpit

>> At a glance.



	Function
①	Exterior lamp switch
②	Steering wheel ¹
③	Instrument cluster
④	Steering wheel gearshift control
⑤	Tachometer*
⑥	Cockpit clock*
⑦	Glove box AUX/USB sockets*
⑧	Overhead control panel
⑨	Audio system*
⑩	Center console switches
⑪	Coin holder Retractable soft top switch ²
⑫	Gear selector lever

	Function
⑬	Starter switch
⑭	Cup holder
⑮	Auxiliary power outlet
⑯	Storage box*
⑰	Wiper switch Cruise control switch* Control lever (control system)*
⑱	On-board Diagnostics Socket (OBD)
⑲	Horn
⑳	Cruise control buttons*
㉑	Door control panel
㉒	Inside door handle

¹ Model pure only: The steering wheel in this vehicle varies from steering wheel illustrated.

² cabriolet only.

* optional

Steering wheel gearshift control



P46.10-3149-31

	Function
①	Multifunction display
②	Right shift paddle ³ : Upshift
③	Left shift paddle ³ : Downshift

i Model pure only:

The steering wheel in this vehicle varies from steering wheel illustrated.

>> At a glance.

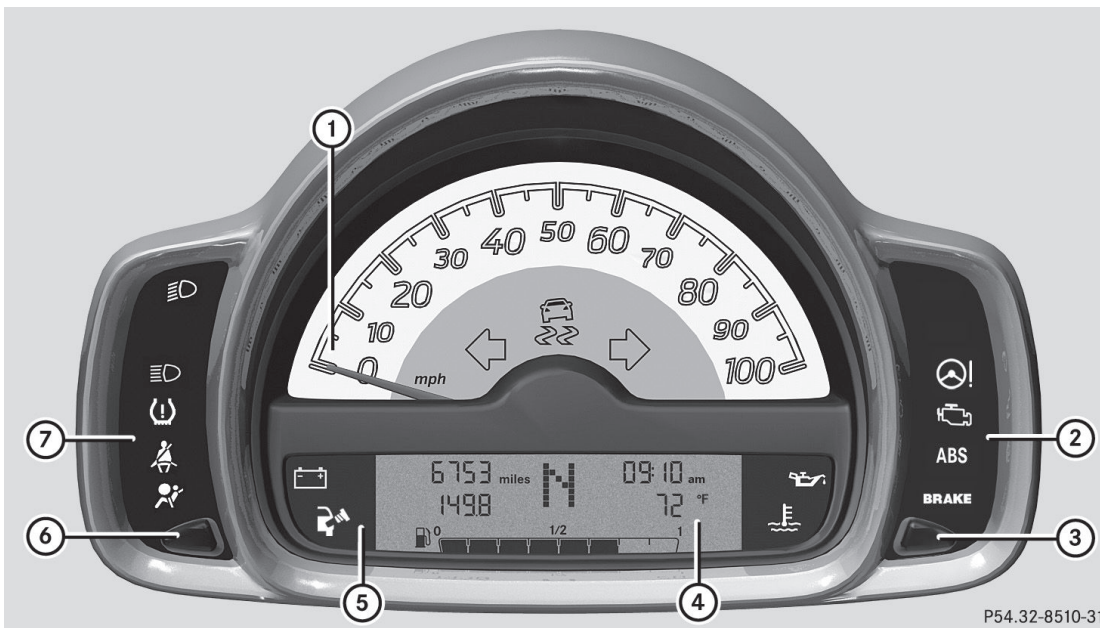
³ Model passion and BRABUS only.

4 Instrument cluster (miles)

Instrument cluster (miles)

Miles

>> At a glance.

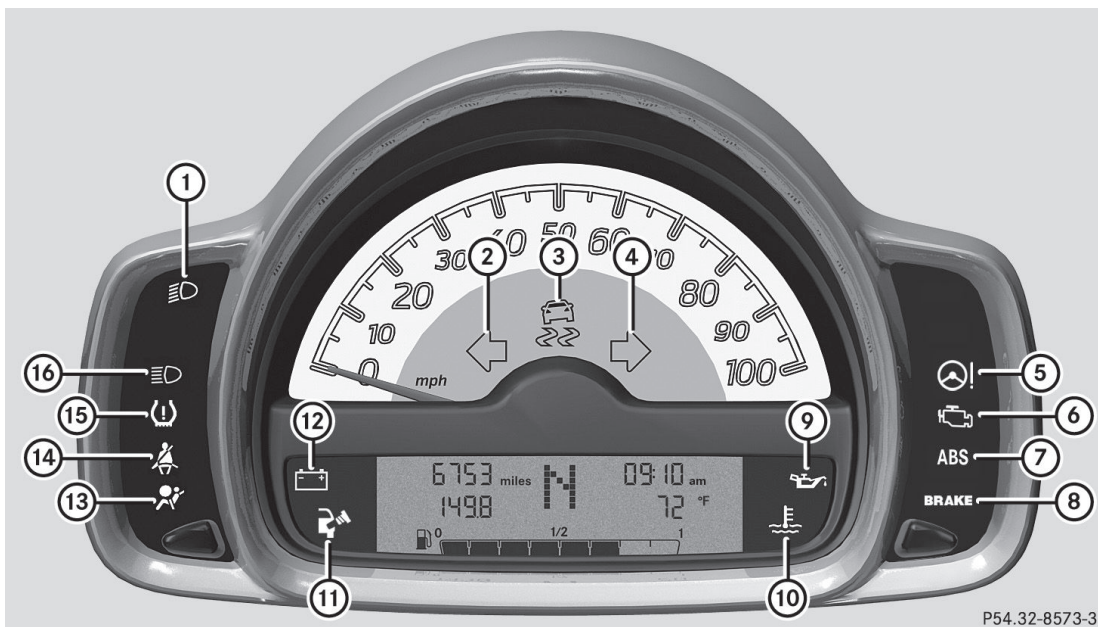


P54.32-8510-31

Instrument cluster (U.S. vehicles)

	Function
①	Speedometer
②	Right indicator and warning lamp display
③	Adjusting instrument cluster illumination Setting digital clock
④	Multifunction display
⑤	Center indicator and warning lamp display
⑥	Selecting display for status indicator Setting digital clock
⑦	Left indicator and warning lamp display

Indicator and warning lamps



>> At a glance.

	Function
①	Low-beam headlamp indicator lamp
②	Left turn signal indicator lamp
③	ESP® warning lamp
④	Right turn signal indicator lamp
⑤	EPS* warning lamp
⑥	Engine malfunction indicator lamp
⑦	ABS indicator lamp
⑧	Brake warning lamp
⑨	Engine oil pressure indicator lamp

	Function
⑩	Coolant temperature warning lamp
⑪	Fuel cap indicator lamp
⑫	Battery indicator lamp
⑬	SRS indicator lamp
⑭	Seat belt telltale
⑮	Combination low tire pressure/TPMS malfunction telltale*
⑯	High-beam headlamp indicator lamp

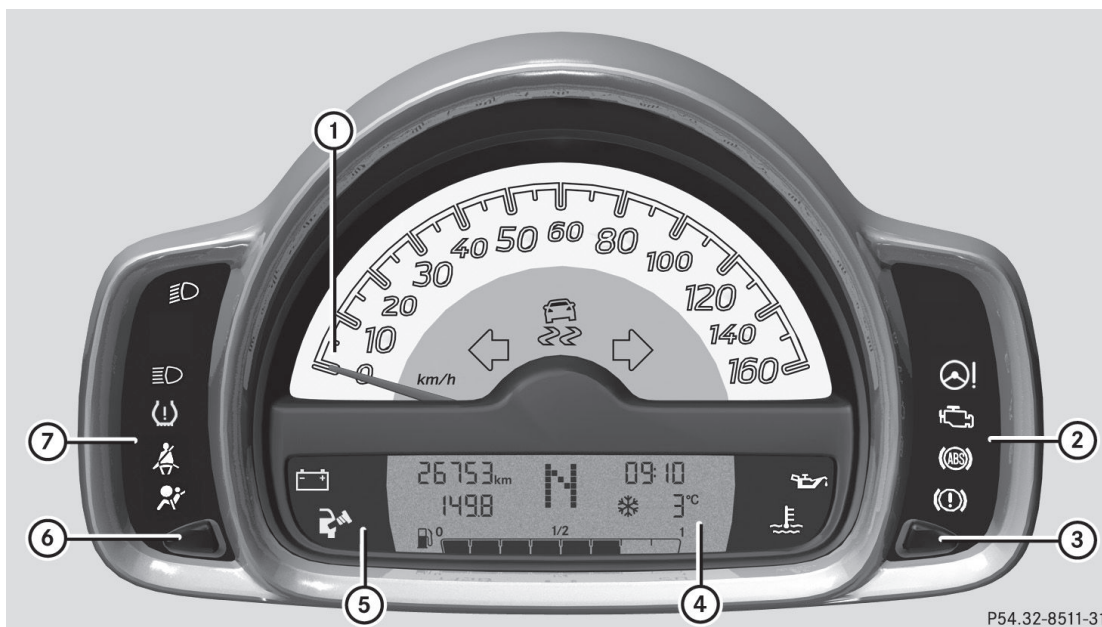
* optional

6 Instrument cluster (kilometers)

Instrument cluster (kilometers)

Kilometers

>> At a glance.

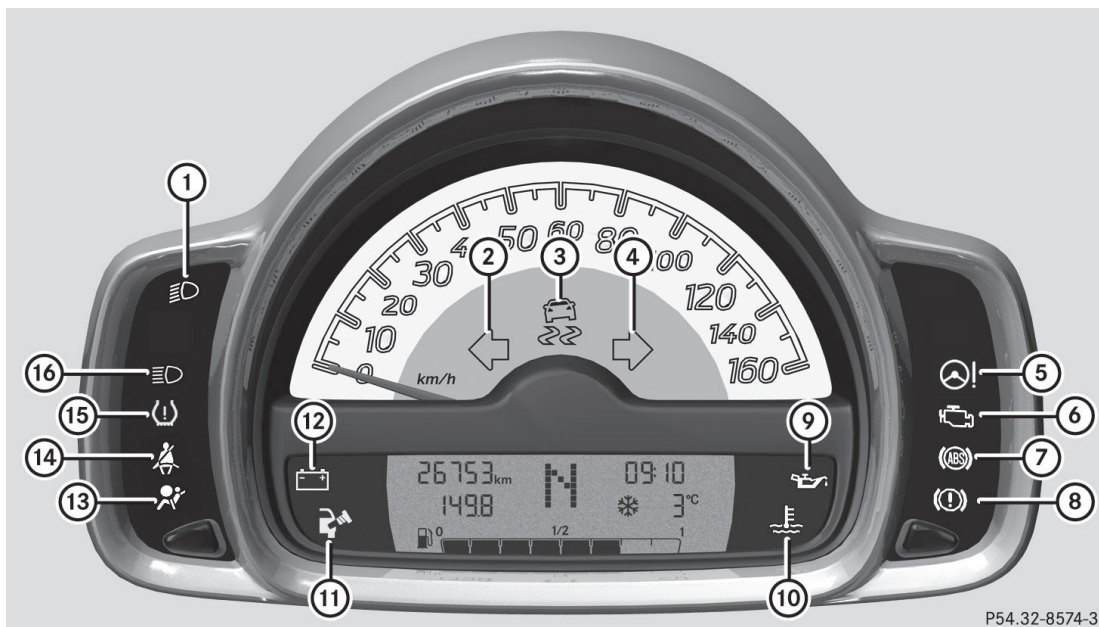


P54.32-8511-31

Instrument cluster (Canada vehicles)

	Function
①	Speedometer
②	Right indicator and warning lamp display
③	Adjusting instrument cluster illumination Setting digital clock
④	Multifunction display
⑤	Center indicator and warning lamp display
⑥	Selecting display for status indicator Setting digital clock
⑦	Left indicator and warning lamp display

Indicator and warning lamps



>> At a glance.

	Function
①	Low-beam headlamp indicator lamp
②	Left turn signal indicator lamp
③	ESP® warning lamp
④	Right turn signal indicator lamp
⑤	EPS* warning lamp
⑥	Engine malfunction indicator lamp
⑦	ABS indicator lamp
⑧	Brake warning lamp
⑨	Engine oil pressure indicator lamp

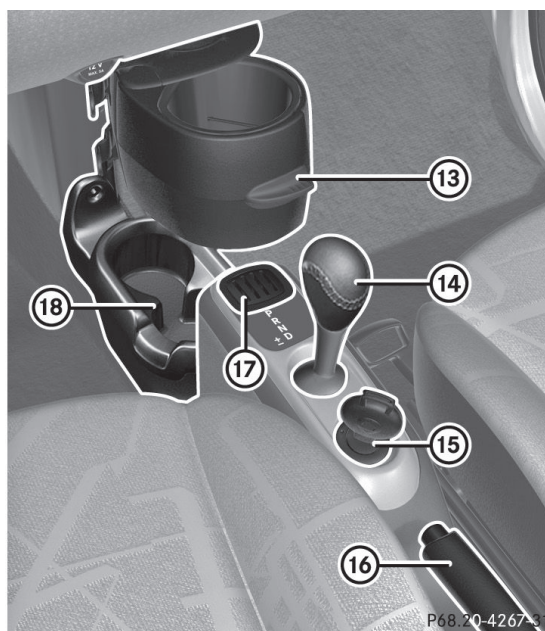
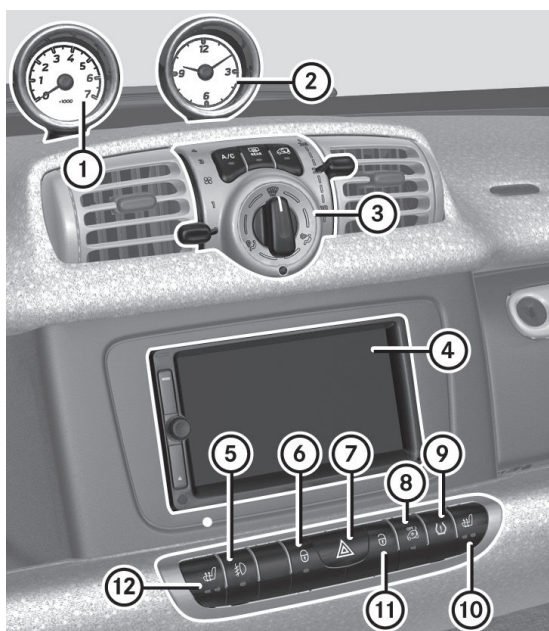
	Function
⑩	Coolant temperature warning lamp
⑪	Fuel cap indicator lamp
⑫	Battery indicator lamp
⑬	SRS indicator lamp
⑭	Seat belt telltale
⑮	Combination low tire pressure/TPMS malfunction telltale*
⑯	High-beam headlamp indicator lamp

* optional

8 Center console

Center console

>> At a glance.



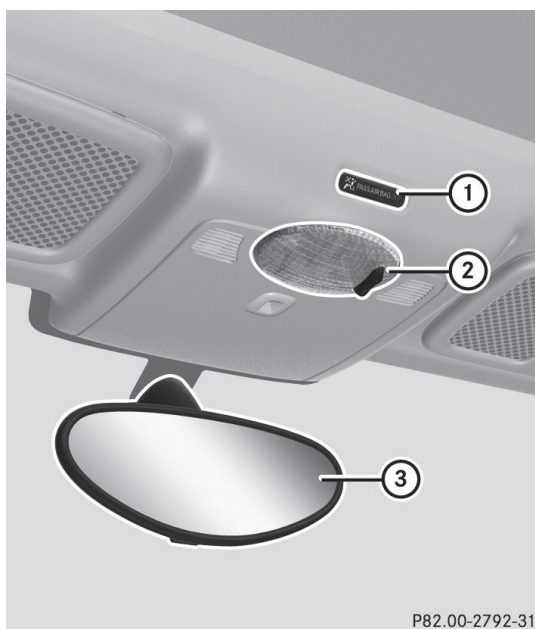
	Function
①	Tachometer*
②	Cockpit clock*
③	HVAC
④	Audio system*
⑤	Switching front fog lamps* on/off
⑥	Central locking switch
⑦	Hazard warning flasher switch
⑧	Switching tow-away protection*/ interior motion sensor* on/off
⑨	Restarting TPMS button
⑩	Switching seat heating* on/off, passenger side

	Function
⑪	Central unlocking switch
⑫	Switching seat heating* on/off, driver's side
⑬	Storage tray*
⑭	Gear selector lever
⑮	Starter switch
⑯	Parking brake lever
⑰	Coin holder Retractable soft top switch ⁴
⑱	Cup holder

⁴ cabriolet only.

* optional

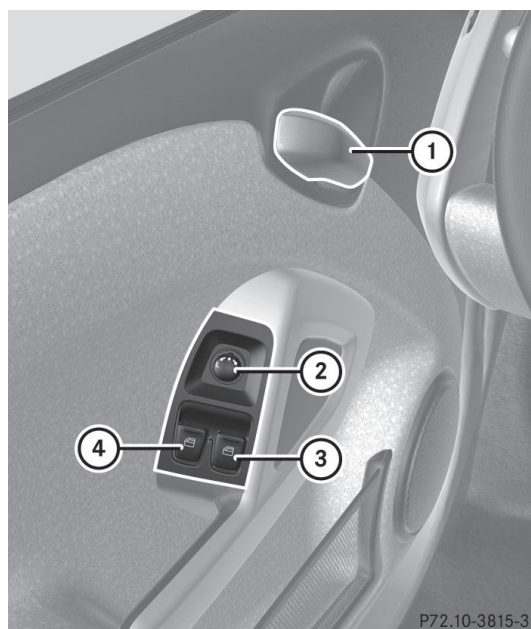
Overhead control panel



P82.00-2792-31

	Function
①	Passenger front air bag off indicator lamp
②	Switching interior lighting on/off
③	Interior rear view mirror

Door control panel



P72.10-3815-31

	Function
①	Inside door handle
②	Adjusting exterior rear view mirrors: Manually Electrically ⁵
③	Opening and closing right side window: Manually Electrically ⁵
④	Opening and closing left side window: Manually Electrically ⁵

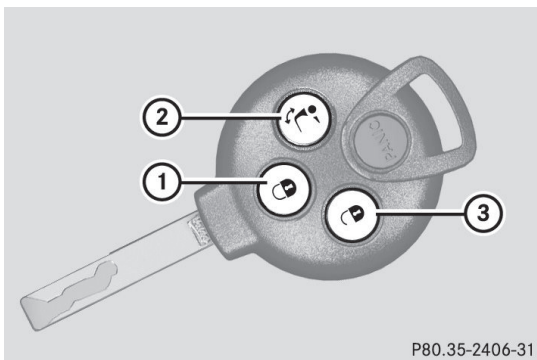
>> At a glance.

⁵ Model passion and BRABUS only.

>> Getting started.

Opening and closing

Key

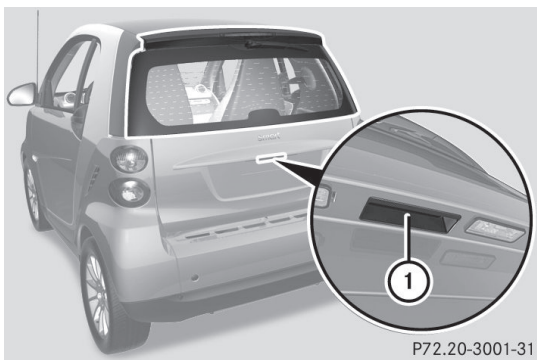


P80.35-2406-31

Key with remote control

- ① Lock button
- ② Opening the retractable soft top⁶/
unlocking the upper tailgate⁷
- ③ Unlock button

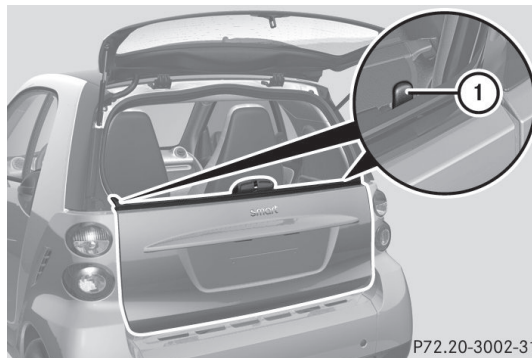
Opening the upper tailgate on the coupé



P72.20-3001-31

- ① Release handle in handle recess

Opening the lower tailgate on the coupé



P72.20-3002-31

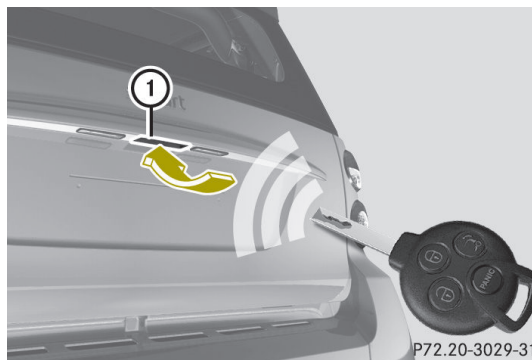
- ① Release levers

Closing the tailgate(s) on the coupé



P72.20-3003-31



Opening the tailgate on the cabriolet



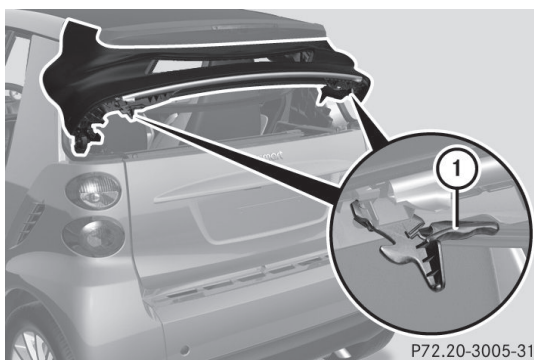
P72.20-3029-31

⁶ cabriolet only.

⁷ coupé only.

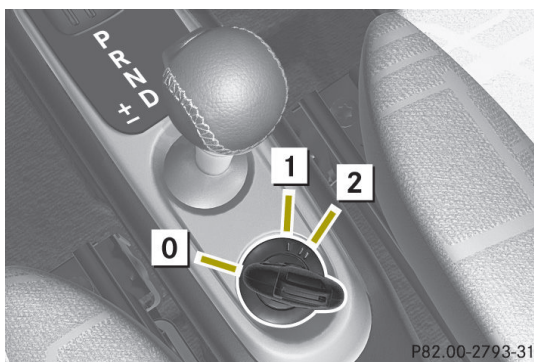
- ▶ Press button  on the key twice.
- ▶ Pull the release handle in handle recess  of the tailgate. The tailgate is unlocked.
- ▶ Swivel the tailgate downwards to open.

Opening and closing the rear soft top (cabriolet only)






-  Release levers

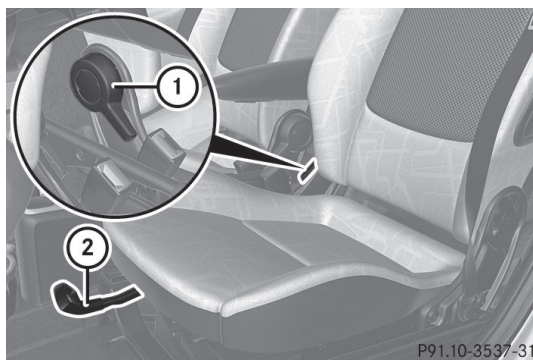
Starter switch positions





Starter switch

- | | |
|---|---|
|  | For removing key |
|  | Ignition (power supply for all electrical consumers) and driving position |
|  | Starting |

Seats

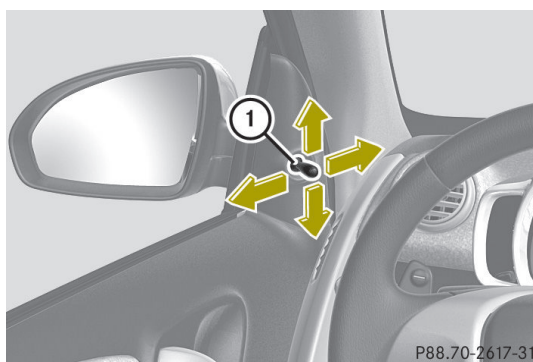


-  Seat backrest tilt
-  Seat fore and aft adjustment

Mirrors

Exterior rear view mirrors

Manually adjustable exterior rear view mirrors



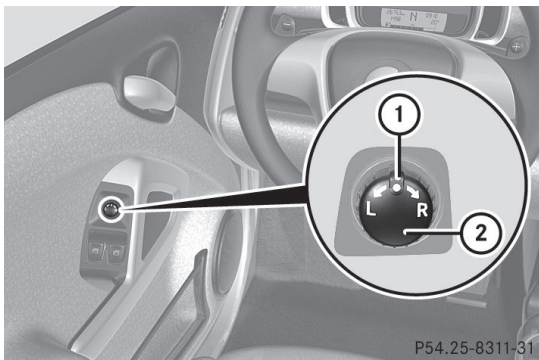
-  Adjustment lever

Power exterior rear view mirrors

This feature is only available on the model passion and BRABUS.

>> Getting started.

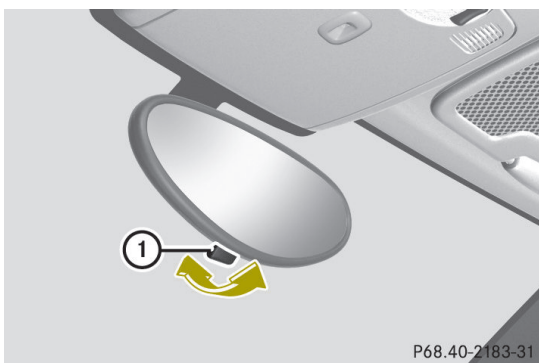
>> Getting started.



P54.25-8311-31

- ① Knob for selecting the mirror
- ② Adjustment button

Interior rear view mirror

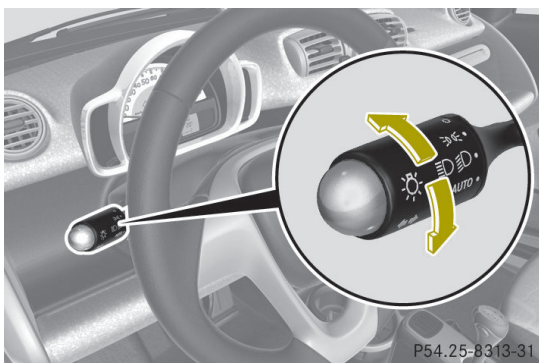


P68.40-2183-31

- ① Lever for selecting antiglare position

Lighting

Low-beam headlamps

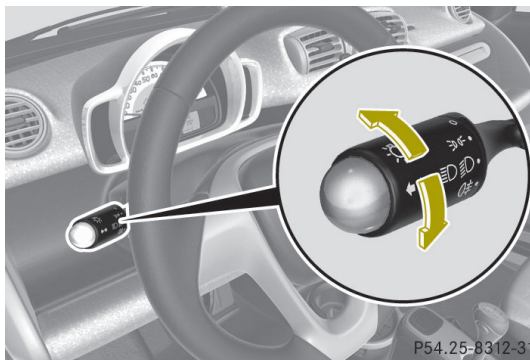


P54.25-8313-31

Exterior lamp switch (USA only)

- 0 Lamps off
- Daytime running lamp mode*

- Parking lamps
- Low-beam headlamps or high-beam headlamps
- AUTO** Automatic headlamp mode*



P54.25-8312-31

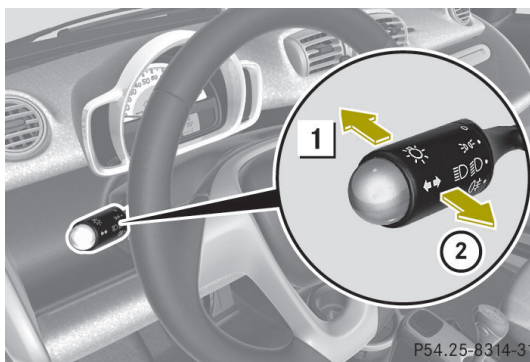
Exterior lamp switch (Canada only)

- 0 Lamps off
- Daytime running lamp mode
- Parking lamps
- Low-beam headlamps or high-beam headlamps

► **Switching on:** Turn the exterior lamp switch to position .

Combination switch (high beam, highbeam flasher and turn signals)

High beam and high-beam flasher



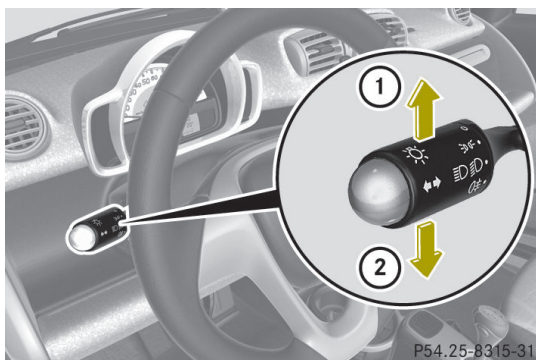
P54.25-8314-31

Combination switch

- 1 High beam
- 2 High-beam flasher

* optional

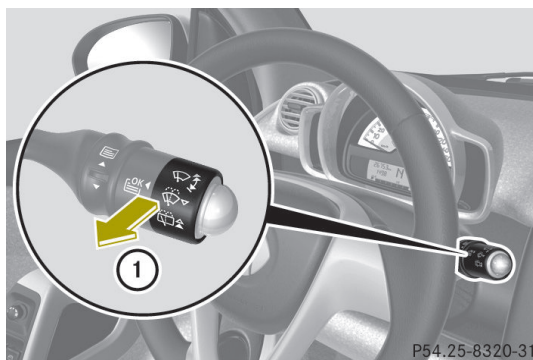
Turn signals



Combination switch

- ① Turn signals, right
- ② Turn signals, left

Wiping with windshield washer fluid

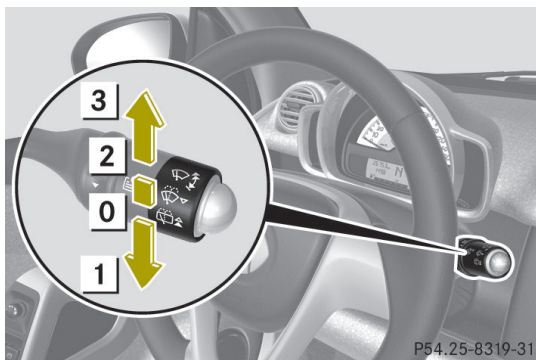


Wiper switch

- ① Wiping with windshield washer fluid

Windshield wipers

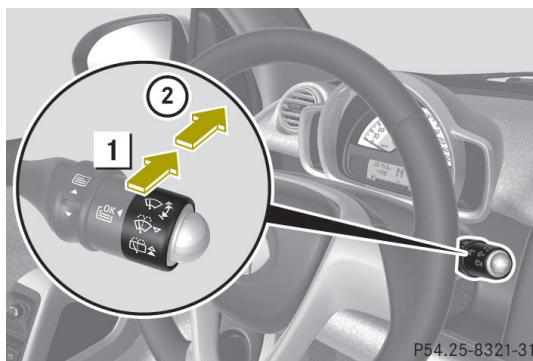
Switching windshield wipers on and off



Wiper switch

- ① Windshield wipers off
- ② Intermittent wiping
- ③ Slow continuous wiping
- ④ Fast continuous wiping

Rear window wiper/washer (coupé only)



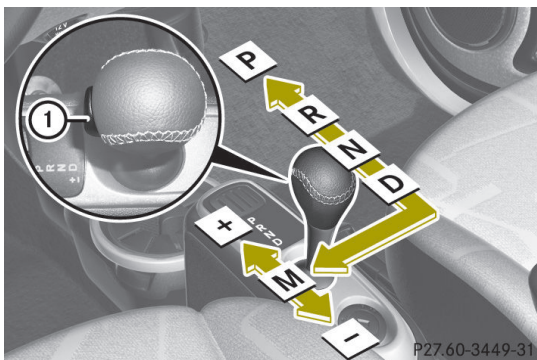
Wiper switch

- ① Rear window intermittent wiping
 - ② Wiping rear window with windshield washer fluid
- i** The rear window wiper wipes one time when reverse gear **R** is engaged with the windshield wipers switched on.

>> Getting started.

Driving and parking

Starting



>> Getting started.

Gearshift pattern for transmission

① Release button

P	Park position
R	Reverse gear
N	Neutral position
D	Drive position
M	Manual gear shifting
+	Upshifting
-	Downshifting

- ▶ Make sure the gear selector lever is set to park position **P**.
The transmission position indicator should be on **P**.
- ▶ Do not depress the accelerator pedal.
- ▶ Turn the key to starter switch position **2** and release it again immediately.
The engine starts automatically ("touch-start" function).

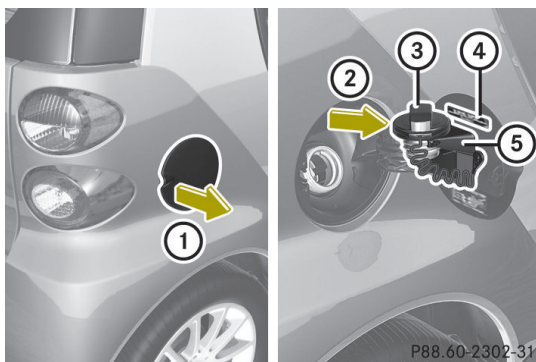
Parking

- ▶ Properly stop and park the vehicle.
- ▶ Depress the brake pedal.
- ▶ Engage the parking brake.
When the ignition is switched on or the engine is running, the brake warning

lamp **BRAKE** (USA only) or **(P)** (Canada only) in the instrument cluster comes on.

- ▶ Release the brake pedal.
- ▶ Turn the key to starter switch position **0** and remove the key from the starter switch.

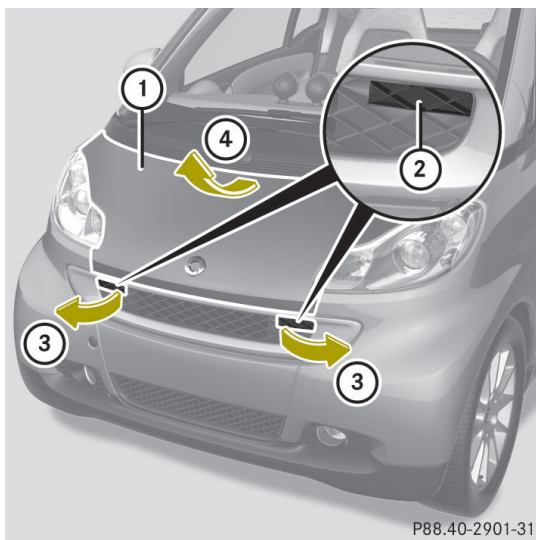
Refueling



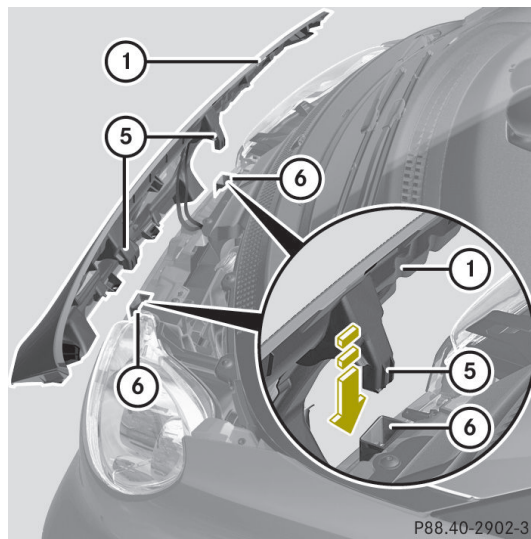
- ① Opening the fuel filler flap
- ② Inserting the fuel filler cap
- ③ Fuel filler cap
- ④ Fuel type label
- ⑤ Holder

Service flap

Remove the service flap to check the coolant level, windshield washer reservoir level, and brake fluid level.



- ▶ Fold both levers ② outward in direction of the arrows ③ as far as they will go.
- ▶ Lift the front end of service flap ①.
- ▶ Pull service flap ① forward slightly and remove it upwards as indicated by arrow ④.



- ▶ Insert hooks ⑤ on the back of service flap ① completely into openings ⑥.

>> Operation.

Where will I find ...?

First-aid kit*

The first-aid kit is located on the driver's side in the cargo compartment.

- i** Check expiration dates and contents for completeness at least once a year and replace missing/expired items.

>> Practical hints.

* optional

Service and Literature

Your authorized smart center has trained technicians and Genuine smart Parts to service your vehicle properly.

For expert advice and quality service, contact an authorized smart center.

For further information you can find us on the smart web-site **www.smartusa.com** (USA only) or **www.thesmart.ca** (Canada only).

Warning!

To help avoid personal injury, be extremely careful when performing any service work or repairs. Improper or incomplete service or the use of incorrect or inappropriate parts or materials may damage the vehicle or its equipment, which may in turn result in personal injury.

If you have any questions about carrying out any type of service, turn to the advice of an authorized smart center.

We reserve the right to make changes in design and equipment.

Therefore, information, illustrations and descriptions in this Quick Guide might differ from your vehicle.

Reprinting, translation and copying, even of excerpts, is not permitted without our prior authorization in writing.

As at 09.03.2010

Order no. 6522 0036 13
Part no. 451 584 99 87
Edition A 2011



www.smart.com

smart - A Daimler brand

Other ManualsLib Projects



www.manualslib.com



www.manualslib.de



www.manualslib.es



www.manualslib.fr



www.manualslib.nl



www.manualslib.mx



www.manualslib.tech 30+ Languages